



July 18, 19, 20
TRACTORFEST
2014
CALL FOR ENTRIES
to the
Aldergrove Fair
EXHIBITS

CONTENTS

President's Message.....	2
Rules and Regulations for Entries.....	2
Prizes	2
CALL for Nominations for Service Awards.....	3
BCAAFE Member's Choice Categories & Awards.....	3
People's Choice Awards.....	3
4-H Events.....	4
A. Baking & Canning.....	4
B. Eggs (Open to Adults, Youth and Preschool).....	4
C. Gardening: Flowers, Plants, Grasses.....	5
D. Fine Arts (painting, drawing, sculpting, etc.).....	6
E. Needlework (sewing, knitting, weaving, etc.).....	6
F. Crafts (cards, beads, soaps, shop works, baskets).....	6
G. Photography... NEW On-line Photo Contest	7
K. 6-12 years Youth Categories	8,9
T. 13-18 years Youth Categories	8,9
P. Preschool Categories (P1 to 5).....	10
SNEAK PREVIEW of SOME EVENTS at the 2014 Fair	
PARADE - 10 am Saturday, July 19 th	11
KIDZONE & Mike the Reptile Guy.....	11
5th Annual SHOW'N SHINE "Bring Your Tractor!"	12
4-H Celebrates 100 Years in BC.....	12
Air Pistol Demonstration & Shooting.....	13
Antique Tractor Pull.....	13
Garden Tractor Pull, Threshing Demo.....	13
The FIRST Worlds Fast Draw Event & Celebrity Shoot...14	
ENTRY FORM (also see FORMS on the website)....	15
2014 Fairbook Sponsors.....	16
2014 Fair Grounds Layout.....	17

ALDERGROVE FAIR DAYS

PROMOTING
AGRICULTURE THROUGH
EDUCATION AND
COMMUNITY NETWORKING
SINCE 1912

Need help filling out your
form?

Other Questions?

Send an Email to:

info
@aldergrovefairdays.com

Or,
Call 604-418-9507

Sponsored in part by



2014 PRESIDENT'S MESSAGE

Aldergrove Fair Days is celebrating our 102nd Annual Agricultural Fair this year - July 18-20th and we are working on some amazing events for our Fair...some are the same as past years, but we have a few new ones that you do NOT want to miss!

We thank our volunteers, committee members and sponsors, because without them we could not put on this incredible community event.

You can keep track of what we are up to on our website: www.AldergroveFairDays.com, our Facebook Pages and Pinterest, which you can access on our website. Please LIKE US and spread the news on YOUR hometown Fair.

See you at the 2014 Fair!

Karen Long

Aldergrove Fair Days

2013-2014 Executive and Directors

President - Karen Long

Treasurer - Robin McIntosh

Secretary - Suzanne Robinson

Directors :

- Mike Robinson - Sue McIntosh

- Patty Bennett - Max Warner

- Karen Robinson - Annette McArthur



Prizes 2014 If the entries merit such recognition, ribbons will be awarded for first, second, and third place in each class. Judging is based on the quality of the work, rather than number of entries per class. If the judge wishes, they may award more than one first, second,

or third place in a class if the entries warrant recognition. Prize ribbons awarded by the judges will be displayed on the entries for the duration of the Fair.

GENERAL RULES AND REGULATIONS FOR ENTRIES SUBMISSIONS

Entry Form (p. 15)

Or download from the Aldergrove Fair Days Website

All entries must be grown by or be the original work of the Exhibitor; entries are ineligible if they have been shown at a previous Aldergrove Fair.

1. **DEADLINE FOR ENTRY FORMS JULY 11, 2014** to allow for processing. Late entries may not be accepted. **Please send in your entries as soon as possible** using either:

Email: info@aldergrovefairdays.com

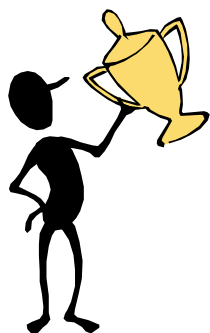
Postal Mail : Aldergrove Fair Days, PO Box 1642 Aldergrove, V4W 2V1 or,

Hand Deliver to the Aldergrove KINSMEN Community Centre, 26770 - 29th Avenue.

2. **DELIVER EXHIBIT ENTRIES** to the **KINSMEN COMMUNITY CENTRE MAIN HALL** 26770 - 29 Avenue, **THURSDAY, JULY 17, 2014 BETWEEN 5:00 AND 8:00 PM.**
3. Entries **MUST NOT** be removed before **3:00 PM on Sunday, July 20, 2014.**
4. All entries **MUST** be picked up between **3:00 PM and 4:00 PM on Sunday, July 20, 2014.** Entries left after 4:00 PM on Sunday, July 20, 2014 will be donated to charity.

NOTE: The Association reserves the right to reject or disqualify any entry that is objectionable or offensive in any way.

The Association is not responsible for any entries that are damaged, lost, or stolen during the Fair. Please leave valuable and irreplaceable items at home. That said, there is security on the Fair Grounds and in the Exhibit Hall and all your displays will be handled with care and attention.



CALL for Nominations for Service Awards

Do YOU know someone
deserving credit for their
efforts to make Aldergrove*
a better place to live?

Submit your nomination letter before
July 10th with details about the nominee to:
Aldergrove Fair Days, Box 1642,
Aldergrove, BC V4W 2V1

Hilda Reddick Community Service Award (adults)

The late Hilda Reddick lived with us in Aldergrove for only a few years where she ran a small shoe store in the Aldergrove Mall. Her fierce dedication to so many organizations epitomized community spirit and service. This award recognizes an adult who lives or works in Aldergrove, for their outstanding service to our community without regard for their own personal gain. **2013 Recipient – Myrtle Clift**

Bev Gold Aldergrove Youth Volunteer Award (ages 13 through 18)

Mr. Flowers, as we best remember him by, was well known to the Aldergrove Community for spending many hours delighting and brightening countless children and adults with his wonderful balloon creations. He always had a smile on his face and a joke to share. Bev had a heart of "Gold" and a love of life. May his commitment to youth be an example to the youth of Aldergrove to celebrate and embrace. **2013 Recipient – Alexandria Kwiatkowski**

*Aldergrove is defined as the area bounded by Zero Avenue, the Fraser River, 240th Street and Mount Lehman Road.



**ATTENTION ALL
EXHIBITORS:**
**2014 BCAAFE
Member's Choice**
Categories Open to all ages

BCAAFE Member's Choice Category #1 – **Sewing**
ITEM: Fabric Table Runner (machine sewn) and decorated using appliqué (see theme)
SIZE: 16" x 48" or 40.64cm x 122cm
DECORATION THEME: BC Fruits & Flowers

BCAAFE Member's Choice Category #2 – Colour Photography

THEME: "Gardening in Pots"
SIZE: 8" x 10" (not to be digitally altered beyond the standard optimization)
MOUNTING: to protect prints from damage, all photos must be mounted on a firm backing with ½ inch to 1 inch black mat border. FRAMES, GLASS, AND/OR UNMOUNTED PHOTOGRAPHS WILL NOT BE ACCEPTED.

BCAAFE Member's Choice Category #3 – Arts & Crafts

ITEM: Hand Painted Terra Cotta Pot (pot can be store bought)
SIZE: maximum 8" or 20.32cm diameter
DECORATION THEME: BC Vegetables

The winning entry in each category will be selected by ballots submitted by delegates and guests at the 2014 BCAAFE Conference, October 23 –25, in Abbotsford and will be awarded a \$50.00 cash prize, together with a beautiful plaque in each category.

PEOPLE'S CHOICE AWARD

Visitors to the Fair may vote for their favourite entry.

- ♦ People's Choice Entry Award-any Entry, All Sections, Except photography
- ♦ People's Choice Award—Photography Only



Division A - BAKING & CANNING

Open to ages 19 and over

Section Rules:

1. **NO** store bought mixes.
2. **NEW** May enter 1 to 3 entries/class. Label multiple entries as, e.g., AB-1-1/3; AB-1-2/3; AB-1-3/3
3. **All entries** must have an attached label identifying the entry (e.g., Blueberry muffins, Double Chocolate Cake, Canned pears)
4. **Place all baked goods** on a disposable plate/tray of appropriate size & covered with a Ziploc-type bag. If the item has a soft or sticky topping, please cover with a clear plastic dome. A full decorated cake may be displayed on a suitable cake tray. **PLEASE** Don't bring your best china or glassware!
5. **All canned goods** must be sealed in standard canning jars with new rings & lids. Use **125 to 500 mL jars**. Rings must be loose, but seals not broken.
6. Canning entries may be made last year.
7. **Sorry!** Entries **CANNOT** be refrigerated. No whipped cream allowed on entries.

Section AB - Baking (see Rules 1, 2 & 3) Class #:

1. Cupcakes, decorated - 3 each, 1 cut in half
2. Squares, 1 kind - 3 pieces, 1 cut in half
3. Muffins, 1 kind - 3 of each, 1 cut in half
4. Cookies, 1 kind - 3 of each, 1 cut in half

Section AC - Canning / Preserves / Condiments

Class #:

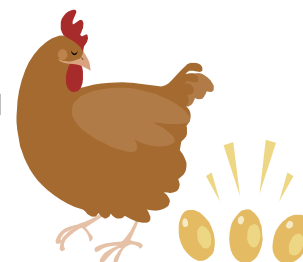
1. Canned fruit, 1 jar
2. Canned vegetable, 1 jar
3. Pickles, 1 jar
4. Jam, 1 jar
5. Jelly, 1 jar
6. Chutney, Salsa, Relish, 1 jar,

Note: Judges will sample your baking and open jars to taste your entry.

Division B - EGGS

Open to ALL ages

RULES: Eggs must be from fowl that are being raised by the exhibitor. Use egg cartons or a suitable size box to transport the eggs. If your chicken(s) has a name, please write it on the carton or box. **Give the hen(s) some credit!**



Label your entry B and the Class #:

1. Brown chicken eggs - 6 eggs e.g., Label B-1
2. White chicken eggs - 6 eggs
3. Colourful eggs, any variety - 6 eggs
4. Bantam eggs - 4 eggs
5. Quail eggs - 4 eggs
6. Duck eggs - 2-4 eggs
7. Exotic eggs from any other type of fowl - 1-2 eggs
8. Oddest shaped, biggest or smallest egg, from any type of fowl - please note the type of bird -1 of each



4-H EVENTS

**Sponsored by the
Township of Langley
4-H events are open to
all Langley District Clubs**

Special B.C. 4-H 100th Anniversary Category:

In celebration of 100 years of 4-H in B.C. the BCAAFE is inviting each of our members to submit the winning B.C. 4-H Educational Display entry from this year's fair. The entries will be judged using the B.C. 4-H judging standards at the BCAAFE Conference in Abbotsford, October 23 – 25, 2014.

B.C. 4-H EDUCATIONAL DISPLAY BOARD theme is Agriculture – Then & Now 1914-2014

The project criteria will follow the B.C. 4-H guidelines. Prizes will be awarded as follows: 1st Place - \$50.00
2nd Place - \$30.00 3rd Place - \$20.00

For more information, please contact
Jessica Johnson at Glenvalley4h@gmail.com or 778-808-5908

Division C - GARDENING (C1-C6) Open to ages 19 and over

All plant entries must be owned by the Exhibitor for at least 1 month prior to the Fair.



Section C1 - VEGETABLE BASKET MEDLEY –prepare a basket containing 4 kinds, up to 3 of each kind in basket. Label your entry C1.

Vegetables should be clean, but not scrubbed. Leafy plants (kale, lettuce) remove roots and small/damaged outer leaves. Vegetables may be grown in your garden or greenhouse.

Section C2 - FRUIT BASKET MEDLEY—prepare a basket containing 3 to 5 types of fruit. Label your entry C2.

Leave stems on all tree fruit. Do not polish fruits or berries. Exhibit brambles (blackberries, loganberries, etc.) and raspberries with hulls removed.

Section C3 - HERB BOUQUET, FRESH ONLY
Label your entry C3.

Tie herbs in a neat bunch of 5 sprigs/blades & display in water. Please use a clear jar/bottle & attach a clearly printed label naming herbs.

NOTES: Vegetables or fruit from each entry may be cut into to determine its inside quality.

Section C4 - CUT FLOWERS

Class #:

1. Mixed flowers bouquet (may use both perennials and annuals)
2. Roses only bouquet—3-5 stems (1 or more kinds)
3. Most fragrant rose—looks don't count!

- Display flowers in a container of appropriate size for the entry. Do not use valuable or irreplaceable containers, as breakage is possible and the Fair cannot be held responsible. Water the plant sufficiently for the duration of the Fair.

Section C5 - OUTDOOR CONTAINER PLANTS (FLOWERS OR SHRUBS)

Class #:

1. One type of plant only- 1 basket / 1 pot
2. Mixed container or/basket, containing 3 or more varieties of plants

Section C6 - ORNAMENTAL GRASSES / HAY

Class #:

1. Grasses, 2" diameter at tie
2. 2014 1st cut local hay - bale
3. 2014 2nd cut local hay - bale

JUDGING CRITERIA

Cut flowers will be judged on:

- **Form** - uniformity and proper shape for variety
- **Stem & Foliage** - strength and/or straightness, quality, size and proportion
- **Colour** - uniformity, intensity, clarity and brilliance
- **Size** - uniformity and proper size for variety
- **Condition** - free of blemish, pests, disease and damage
- **Fragrance**—intensity, pleasing the senses of the Judges
- **Uniqueness**—surprise the judges with the most unusual colour and/or form

Plants will be judged on:

- **Foliage** - clean, healthy, of good colour
- **Condition** - old foliage or blooms removed; free of blemish, pests, disease and damage
- **Size** - plant and pot size of proper proportion

WHAT'S IN SEASON IN JULY?

According to the BC Association of Farmers' Markets these fruits and vegetables *should* be ready:

Apricots, Basil, Beans, Beets, Blueberries, Broccoli, Cabbage, Carrots, Cauliflower, Celery, Cherries, Chinese Vegetables, Chives, Cilantro, Cucumbers, Kale, Lettuce, Peas, Peppers, Potatoes, Radish, Raspberries, Rhubarb, Rosemary, Sage, Salad Greens, Spinach, Strawberries, Summer Squash, Swiss Chard, Tomatoes, Thyme, Turnips.

Division D - FINE ARTS

(Sections D1-D3) Open to ages 19 and over

Section Rules:

1. All entries must be the original work of the exhibitor, NOT copies of work by other artists.
2. Cover your name if you have signed your work.
3. You may enter 1 to 3 entries per class.

Section D1 - 2-D WORKS OF ART

State medium/method, e.g., charcoal, pastel, pencil; oil, acrylic, or watercolor paint; monotype, screen prints, zentangle ink, pencil etc. NOTE: ALL pictures MUST be securely wired and ready for hanging. Do not exceed 36" x 36" including the frame, if there is a frame.

Class #: 1. Representational art - any medium

Class #: 2. Abstract - any medium

Class #: 3. Mixed Media

Section D2 - 3-D WORKS OF ART

State medium/method, e.g., slab, raku, glazed, fired pottery; collage, fiber wall hanging, recycled material etc.

Class #: 1. Pottery, Ceramics or Sculpture, any item decorative or functional

Class #: 2. Collage/Fiber wall hanging

Section D3 - COMPUTER-GENERATED WORKS OF ART

state program used

Division E - NEEDLEWORK

Open to ages 19 and over

Section Rules:

1. The Exhibitor must have made the items by hand.
2. If work bears a signature, cover or remove for judging.
3. The Fair organizers will take good care of all items, but please leave valuable items or those that require special care at home where they are safe.

Section E1 - Knitted or Crocheted Scarf

Section E2 - Knitted or Crocheted Baby garment or set

Section E3 - BCAAFA Member's Choice

Category #1 – Sewing ITEM: Fabric Table Runner (machine sewn) and decorated using appliqué (see theme) SIZE: 16" x 48" or 40.64cm x 122cm DECORATION THEME: BC Fruits & Flowers

Division F - CRAFTS

(Sections F1-F3)

Open to ages 19 and over

This section includes useful and decorative items made completely by hand or by using only simple tools.

CRAFTS are judged on creativity, quality of work, and pleasing esthetics.



Section F1 - SHOP CRAFTS

Class #:

1. Hand-Made of Wood, any functional item
2. Hand-Made of Wood, any decorative item
3. Hand-Made of Metal, any functional item
4. Hand-Made of Metal, any decorative item

Section F2 - HANDMADE CARDS

Cards may be embellished with stickers, flowers, stamping, embossments, ribbons or fibers. Use a protective covering on all cards.

Class #:

1. Special Occasion Card (e.g., Birthday, Baby Announcement, Valentine's Day, Thank-you, Wedding, Party Invitation, etc.) - 1 to 5 cards max
2. Special Holiday Card - 1 to 5 cards

Section F3 - DECORATIVE GENERAL HOBBIES

Class #:

1. Handcrafted jewelry, set or individual item—any material
2. Calendar made from your photographs
3. Painting on glass, any style, flower theme
4. Scrapbooking: any themed scrapbook, cover should indicate theme— 1-3 entries
5. Memory page, single or double page layout (use protective covering) - 1-3 entries
6. BCAAFA Member's Choice Category #3 – Arts & Crafts ITEM: Hand-Painted Terra Cotta Pot (pot can be store bought) SIZE: maximum 8" or 20.32cm diameter DECORATION THEME: BC Vegetables



Division G - PHOTOGRAPHY

Open to ages 19 and over

RULES All photography classes are open to both digital & 35 mm film photography.

- All photos must be taken by the exhibitor.
- **NEW FOR 2014** YOU MAY ENTER 1 TO 3 PHOTOGRAPHS PER CLASS #.
- **This year there is no distinction between Novice and Advanced.**
- Photos may be either black & white or colour, unless otherwise specified.
- Photo size: minimum 4"x6"; maximum 8"x12".
- Mount on white or black cardstock or poster board with a 1" border as each will be pinned to display. Not mounted—not displayed!
- Panoramic photos to be 4"x 6" and must be mounted together on white or black cardstock or poster board with a 1" border around display. Photos not to exceed 18 inches joined (19" with border)
- Attach a label to back of each entry listing exhibitor's name, section, and class #.
- If necessary, use an arrow to indicate which way is up by marking the back of the photograph.

Label your entry G and the class

For 3 entries in one class label as follows, e.g., G1-1/3, G1-2/3, G1-3/3

Class #:

1. One Person Only Portrait - head and shoulders
2. One Animal Only Portrait
3. Your subject of choice **Only in black and white**
4. Make Us Laugh—a funny/humorous photo
5. Opposites in one photograph: e.g., big and small, high and low, dark and light, far and near
6. Panoramic view print set of 3 to 5 photographs, any location—not to exceed 18 inches joined

BCAAFE Member's Choice Category #2 – Colour Photography

THEME: **"Gardening in Pots"** SIZE: 8" x 10"

(not to be digitally altered beyond the standard optimization)

MOUNTING: to protect prints from damage, all photos must be mounted on a firm backing with ½ inch to 1 inch black mat border.

PHOTOGRAPHS with FRAMES, GLASS, AND/OR RECEIVED UNMOUNTED WILL NOT BE ACCEPTED.

******NEW THIS YEAR******

On-line Photo Contest

To celebrate this year's theme **TRACTORFEST**, please EMAIL a photograph (max 3 per person) of **YOU WITH A TRACTOR**.

IMPORTANT PHOTOGRAPHY INFORMATION

- ♦ **Entries considered offensive will not be allowed to compete or be displayed.**
- ♦ **Permission must be obtained from any people in photographs before their images may be shown.**



- May include photos taken anytime from 1912 to 2014! If known, add the date the photo was taken, or circa 1950s, 1960s etc.
- May include more than 1 person. Add a caption to your photos, e.g., *"Fun on Grandpa's Farm in the 50s"*
- Include your name and contact info.
- Email to: Info@AldergroveFairDays.com

Judging is Friday, July 18th, 2014 and results will be announced on Saturday, July 19th, 2014 at 3:00 pm on the Main Stage. Winning photos will be printed, then displayed in the Exhibits Hall (Kinsmen) during the Fair.

YOUTH CATEGORIES Division K ages 6 to 12 years Division T ages 13 to 18

Rules:

1. **NO store bought muffin, cake or cookie mixes.**
2. **Attach** a label identifying the entry (e.g., Blueberry muffins)
3. **Place all baked goods** on a disposable plate/tray of appropriate size & covered with a Ziploc-type bag. If the item has a soft or sticky topping, please cover with a clear plastic dome.
4. **Is it HOT? Please Supervise Younger Children.**
5. **Sorry!** Entries CANNOT be refrigerated. No whipped cream toppings.

Section K1 - BAKING - ages 6 to 12;

Section T1 - BAKING - ages 13 to 18 years

Class #:

1. Muffins, 1 kind - 3 each, one cut in half
2. Cupcakes, w/wo icing, any kind - 3, one cut in half
3. Cookies - 1 kind, 3 each, one cut in half
4. Rice cereal squares - 2 each plain or fancy

Section K2 -VEGETABLES & FRUITS - 6 to 12

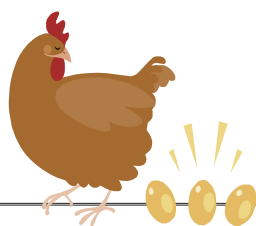
Section T2 -VEGETABLES & FRUITS - 13 to 18

Class #:

1. Vegetable and Fruit Basket—4 kinds, up to 3 of each kind in basket
2. **Fruit-Veggie-Nuts FARMER!** - Design & build a FARMER using only fruits, vegetables &/or nuts. Items may be purchased or grown by the exhibitor. *Additional props are permitted.* Vegetables may be fastened with wire, glue or toothpicks. **May the best FARMER win!**

Vegetables should be clean, but not scrubbed. Leafy plants (kale, lettuce) remove roots and small/damaged outer leaves. Vegetables may be grown in your greenhouse.

NOTE: One vegetable or fruit from each entry may be cut into to determine its inside quality.



**SEE page 4 Division B -
EGGS
Open to ALL ages**

Section K3 - FLOWERS & PLANTS- 6 to 12;

Section T3 - FLOWERS & PLANTS - 13 to 18

NOTE: All plant entries must be owned by the Exhibitor or Their Family for at least 1 month prior to the Fair.

How to prepare flower entries:

Display in a vase, jar, or can of appropriate size for the entry. Add enough water for 3 days.

Class #:

1. Marigolds - 5 blooms, 1 kind
 2. Largest Leaf - any kind
 3. Bouquet, at least 3 kinds of flowers
 4. Best Smelling Flower in Your Garden - 1 to 3 blooms
- Please describe! *Is it sweet/spicy?*



Section K4—NEEDLEWORK -ages 6 to 12;

Section T4 - NEEDLEWORK- ages 13 to 18

Knitted or Crocheted Scarf Label as K4 or T4

BCAAFE Member's Choice Category #1 –

Sewing ITEM: **Fabric Table Runner** (machine sewn) and decorated using appliqué (see theme) SIZE: 16" x 48" or 40.64cm x 122cm
DECORATION THEME: BC Fruits & Flowers

Section K5 - WORKS OF ART- 6 to 12;

Section T5 - WORKS OF ART - 13 to 18

- Must be the original work of the exhibitor.
- Do not exceed 30" x 30" including the border.
- ALL pictures MUST be - **mounted on black or white paper** with a 1" border so it can be pinned to the display boards.
- Enter 1-2 items/ class. If you enter 2 items label, e.g., T5-1-1/2, T5-1-2/2

Class #:

1. Painting, any subject, any medium
2. Freehand drawing, any subject, any medium
3. **NEW 2014** Zentangle drawing, any pattern
4. Pottery, any item
5. Computer art, any subject
6. Drawing, painting, collage, sculpture, or paper maché of a FARMER or a TRACTOR or BOTH!



Section K6 - PHOTOGRAPHY - ages 6 to 12;

Section T6 - PHOTOGRAPHY - ages 13 to 18

NEW 1 to 3 entries per class # allowed, except class #6. See NOTE below.

- Permission must be obtained from any people in photographs.
- Mount photographs on white or black paper, cardstock or poster board with a 1" border.
- Attach a label to back of each entry listing exhibitor's name, category, section, and class #. If necessary, indicate with an arrow which way is up.
- All prints to be no smaller than 4"x6" and no larger than 8"x12".
- Picture story photos to be 4"x6" & must be mounted together on white or black paper, cardstock or poster board with a 1" border around display.

Class #:

1. Close-up of one person—just how close is up to you!
2. One or more farm animals
3. Make Us Laugh—submit a funny/humorous photo
4. Any pet playing with a toy, person, or other pet
5. Opposites in one photograph: e.g., big and small, high and low, dark and light, far and near, old and new
6. Picture story, any subject - set of 4 prints that tell a story—**Give Your Story a Title**

NOTE: If you enter 3 entries in one class label the entry as follows, e.g., K6-1-1/3, K6-1-2/3, K6-1-3/3; T6-1-1/3, T6-1-2/3, T6-1-3/3

Please check the Adult Photography Section for rules about these 2 extra Categories that Youth K2 and T2 may enter.

1. **On-line Photo Contest** Send a photograph (max 3 per person) of **YOU WITH A TRACTOR**, add a caption to your photos. Provide your name and age, then send to us via email at

Info@AldergroveFairDays.com

2. BCAAFA Member's Choice Category #2 – Colour Photography

THEME: "Gardening in Pots" SIZE: 8" x 10"

Section K7 - CRAFTS - ages 6 to 12;

Section T7 - CRAFTS - ages 13 to 18

This section includes useful and decorative items made completely by hand or by using only simple tools. *Keep Traditions Alive!*

Class #:

1. Any theme scrapbook or journal made using photos, craft supplies etc.
2. Handmade cards - for different occasions. Enter up to 3 cards. Must have protective covering.
3. Short story put together as a book, with title
4. Beadwork, any variety, any item
5. LEGO creation no larger than 12"x16", on a base and covered securely
6. Meccano, K'nex or similar building toy creation, no larger than 12" x 16", on a base & covered securely
7. Plastic model from kit or handmade
8. Metal model from kit or handmade
9. *I Made It From Wood* (e.g., Birdhouse or bird feeder, from a kit or handmade; box; toy; any article)
10. Diorama, farming with a tractor theme

BCAAFE Member's Choice Category #3 –

Arts & Crafts ITEM: Hand-Painted Terra Cotta Pot (pot can be store bought) SIZE: maximum 8" or 20.32cm diameter DECORATION THEME: BC Vegetables

Section K8 - COLLECTIONS - ages 6 to 12;

Section T8 - COLLECTIONS - ages 13 to 18

- Collections NO larger than 24" x 24".
- Arrange collections in a container or on a base.
- Collections may be covered with clear wrap.
- Please fasten all collection items securely.
- While care will be taken to protect all entries, *please leave valuable or breakable collections at home where they are safe.*

Class #:

1. Sports Team collection
2. Cartoon collection
3. Animal collection (mixed animals or 1 type only)
4. Shell collection
5. Rock collection
6. Doll collection (Please, DO NOT use porcelain or valuable breakable or irreplaceable dolls)
7. Any other collection

Division P - PRESCHOOL

Open to ages 5 and under - Note child's age on Entry Form

CHILD MUST DO MOST OF THE WORK, BUT MAY HAVE ASSISTANCE FROM A SUPERVISING ADULT OR OLDER YOUTH. PARENT OR GUARDIAN-PLEASE SIGN THE ENTRY FORM TOO.

Section P1 - BAKING (ONLY 1 CLASS)

- Rice cereal squares, plain or fancy - 2 **Label P1**
- Display on a disposable plate/tray of appropriate size & covered with a Ziploc-type bag.

Section P2 - GARDENING

- Vegetables should be clean, but not scrubbed.
- Fruit - leave stems attached, do not polish.

Class #:

1. Little basket with 2-4 vegetables and/or fruit from your garden
2. Oddest shaped vegetable or fruit
3. Marigolds - 5 blooms, 1 kind
4. Bouquet of flowers, at least 3 kinds
5. **Veggie-FARMER!** - Use any vegetable or fruit material to create the best farmer. Items may be grown by exhibitor or purchased. Wire, wood, plastic fasteners, and even glue are allowed.

Section P3 - WORKS OF ART

NOTE: Mount Artwork on black or coloured paper with a 1" border for pinning to the display boards.

Class #:

1. Freehand drawing, Any subject, any medium
2. Coloured picture (*judged on colouring only*, picture may be from a colouring book)
3. Painting with a brush, any subject
4. Finger Painting, any subject, can be abstract—use 2 or more colours
5. Foot Painting—use 2 or more colours

Section P4 - CRAFTS

Class #:

1. Scrapbook or memory page, any theme
2. Handmade card
3. Collage - cutting and pasting
4. Sticker page
5. LEGO, any article (max. size 12" x 16"), on a base or in a container

Section P5 - COLLECTIONS

- Collections NO larger than 24" x 24".
- All collections to be arranged in a container or on a base, and must be covered.
- Please fasten all collection items securely.
- While care will be taken to protect all entries, please leave valuable or breakable collections at home where they are safe.

Class #:

1. Toy cars or trucks collection - 6 items
2. Doll collection (please, no porcelain or breakable dolls)
3. Toy animals collection
4. Rock collection
5. Any other collection

PLEASE—

ONLY 1 ENTRY PER CLASS # ALLOWED, BUT ENTER SEVERAL CLASSES!

MARK WARAWA

Member of Parliament, Langley

Congratulations to Aldergrove Fair Days on celebrating 102 years as one of Canada's greatest fairs!

Strong Leadership. A Better Canada.



markwarawa.com

mark.warawa@parl.gc.ca

104-4769 222 Street, Langley



CRANKY'S BIKE SHOP

www.crankysbikeshop.com

604.856.1688

2961 - 272nd St. Aldergrove BC V4W 3R3



PARADE Saturday, July 19th at 10:00 am
What a great way to start the Fair weekend...with a Parade - Downtown Aldergrove on Saturday, July 19th at 10:00 am. Watch, cheer on, or participate in our annual parade. Find the Parade Entry Forms on our website.



KidZone is back for its 7th Year

Aldergrove Neighbourhood Services is pleased to offer the KidZone under the tent for the seventh summer—a great place where families can explore, play and create magical moments together. Look for exciting ideas, activities, and crafts for families to enjoy. Children may have their face painted into princesses, favorite animals or maybe even a super hero and play with life size board games. We also share the KidZone with **Mike the Reptile Guy** and all of his exotic animals, like snakes, turtles, frogs, spiders and lizards. Everybody can have a hands on experience with these creepy, crawly critters while Mike educates them. Mike provides a fun and interactive way for people of all ages to learn about the proper care of exotic animals and the threats that they face in both captive and wild environments. **Come and participate in Mike's Fear Factor challenges.**



5th Annual SHOW'N SHINE

CELEBRATING TRACTORS

AT THE 2014 TRACTORFEST



“bringing out life and colour with old iron and new paint”



WHEN: Friday, July 19 from 6:00 to 9:00 pm.
WHERE: Aldergrove Community Secondary School parking lot 26850 – 29 Ave.

Bring your tractors, domestic hot rods and classic cars, import cars, military vehicles, motorcycles, race cars, etc. to make this one of the highlights of the Fair.

I invite you to participate again this year.
 Patty Bennett,
 Director, Aldergrove Fair Days



2014 marks 100 years of 4-H in BC

Clubs were originally known as Boys and Girls clubs until they were renamed 4-H clubs in 1952 to more clearly represent the four H's - head, heart, hands and health. Swine, beef, dairy, corn, potato and poultry projects were popular in the early years. Today horse, beef and sheep projects are the most popular, however, members are increasingly enrolling in projects such as dog, rabbit, swine, llama, and photography. While 4-H has changed and evolved since its start in 1914, the impact of the program on our young people is as relevant today as it was back then. 4-H continues to teach young people to successfully meet the challenges not only of their own futures but also the future of their communities.

4-H Speak and Show Competition The 4-H program aims at developing the whole person. Part of this development involves learning how to communicate effectively. One of the four activities in the 4-H Communications Program is Speak and Show. Speak and Show is a presentation that can be a demonstration or an illustrated talk delivered by one member. Junior members aged 9-13 perform 5-10 minute presentations and senior members aged 14-19 perform 10-20 minute presentations.

We are showcasing our top Junior and Senior member Speak and Shows from each 4-H club in the Langley District on Saturday July 19th.

For more information about 4-H in Langley please visit our website www.langley4h.ca or email langleydistrict4h@gmail.com



Photo: Submitted by Langley District 4H

NEW EVENT at the FAIR - AIR PISTOL DEMONSTRATION & SHOOTING



For the first time this year participants will get a chance to assess their pistol shooting skills.

The British Columbia Target Sports Association with the Langley Rod & Gun Club will provide a shooting range for people to shoot air pistols. The event will be manned by Range Officers in a safe shooting range.

Langley Rod & Gun Club has been in operation since 1946 providing a safe and friendly facility where individuals can enjoy many shooting disciplines. It is well known for its support and training of young members having **produced 3 Olympians** in air pistol competition.

COME AND MEET THE CHAMPIONS

In 2013 **Dorothy Ludwig** brought home a Gold medal as the *Canadian Ladies Air Pistol Champion* and 16 year old **Jessica Auton** brought home the Gold medal as the *Canadian Junior Ladies Air Pistol Champion*.

BC Target Sports Association believes that target shooting is a life-long sport and supports shooters of all disciplines and ages.



ANTIQUE TRACTOR PULL —Back By Popular Demand!

In the **Antique Tractor Pull** competition antique tractors pull a weighted sled a distance of a maximum of 300 feet. The tractors must weigh within a certain weight for each competition. There are different weight classes and they all pull for the furthest distance. First, second, and third prizes are awarded to the tractor that pulls the same weight the furthest distance.

NEW EVENTS at the FAIR

The **Garden Tractor Pull or Lawnmower Pull** is a scaled down equipment competition that follows the same rules as the Antique Tractor Pull. The Garden Tractor Pull is equally entertaining and provides an opportunity for more people to get involved. We will operate the Garden Tractor Pulls the same as the Antique Tractor Pull, same rules apply.

The **Threshing Demo** is the method used on the Prairie Farms to get the grain from fields. First, the farmer would use a binder to cut the standing grain in the field and then make bundles. The bundles were picked up by horse drawn wagon and delivered to a threshing machine. The threshing machine separated bundles into straw and grain. The grain was collected for processing into cereals or flour for our breads. The straw was used as animal feed, or bedding for the animals, or on the land to provide fertilizer.



THE FIRST “WORLDS FAST DRAW” EVENT — HELD AT THE ALDERGROVE FAIR JULY 2014 —

CANADIAN FAST DRAW CHAMPIONSHIPS HISTORY The Sport of Fast Draw puts men and women of all ages up against modern electronic timers. All shooters, wearing western-style attire, using single-action sixshooters which are loaded with BLANKS only, must draw them from holsters and fire at random balloon targets. Timers separate winners of various divisions.

The first Canadian Fast Draw Championships were held in 1968 in New Westminster, B.C. during their Wild West Days. and hosted by the Thunderbird Fast Draw Club. Burnaby's Karen Robinson was the first Canadian winner of the Championships. Several Canadian Championship titles have taken place in such as Paterson Park Raceways, The PNE, and at Langley Rod and Gun Club. The Championships moved to Alberta, where the Benedictson family hosted them for years. Back to B.C., and thanks to sponsors like the Langley Township for the last six

years, and steady donors as Frontier Gunleather, Guns Of The Old West and Canadian Firearms Journal magazines, **the contest has now qualified as a WORLDS Fast Draw event**, sanctioned by the World Fast Draw Association! The defending champions are Aldergrove's own Nicole Franks, and Jon Rivera of California.

Details are found at:

www.thunderbirdfastdraw.com

A **Celebrity Challenge** event also takes place, featuring such regular winners as MLA Mary Polak, Deputy Premier Rich Coleman, MLA Peter Fassbender, MP Mark Warawa and others. Defenders are Stefania Seccia, Reporter, *Burnaby Now*, and Rudy Storteboom, representing MacRealty.

To witness a one-of-a-kind event, come ride the trigger trail on July 19/20, 2014. We look forward to meeting you, *pardner!*

Dennis Robinson,

Karen Robinson, Director, Aldergrove Fair



2014 ALDERGROVE FAIR DAYS - Celebrating "TRACTORFEST"

EXHIBITOR ENTRY FORM (Adult, Youth, and Preschool)

DEADLINE: Entry forms must be received by **July 11th, 2014.**

Submit forms by either: Email : info@aldergrovefairdays.com ,

Postal Mail : Aldergrove Fair Days PO Box 1642 Aldergrove, V4W 2V1 or,

Hand Deliver to: Aldergrove Kinsmen Community Centre, 26770 - 29th Avenue.

PLEASE PRINT CLEARLY (All your information provided is for office use only. It will not be sold or used for any commercial purposes.)

NAME: _____

ADDRESS: _____

TELEPHONE: _____ **EMAIL ADDRESS:** _____

AGE CATEGORY (please check): ADULT (19 and over): _____

YOUTH (K6 to 12 years): _____ **(T13 to 18 years):** _____ I am _____ years old

PRESCHOOL (5 and under): _____ I am _____ years old

BCAAFE ENTRY

Please check

1 2 3

Do not write here	SECTION letter	CLASS number	DESCRIPTION OF ENTRY (Use same wording as in Entry Book)

I have read and understood the RULES in the Call for Entries Book, and agree to follow them.

Signature of exhibitor: _____

(Preschool to age 12 also requires parent or guardian signature)

A guardian/caregiver may sign for an exhibitor who is unable to sign for themselves.

Need more forms? Photocopy additional forms or Print from the website www.aldergrovefairdays.com
Please call 604-418-9507 if you need help completing the form. **Enter as many Classes as you wish;**
use a second entry page if necessary.

REMEMBER: Bring your ENTRIES & COMPLETED FORM to the KINSMEN COMMUNITY CENTRE MAIN HALL
26770 – 29th Avenue, **THURSDAY, JULY 17, 2014 BETWEEN 5:00 AND 8:00 PM.**

[Pick up between 3:00 PM and 4:00 PM on Sunday, July 20, 2014]

Many Thanks to our 2014 Fairbook Sponsors!

Fun for the whole family!

Alder-ALLEY BOWL The COOL place to...

www.alderalley.com

27070 Fraser Highway Phone 604-856-2034

Quiring TOWING

Serving The Pacific Northwest Transportation Industry Since 1962

Heavy Duty Recovery & Rigging Specialists
Air Cushion Recovery System
Complete Cargo Handling
Light & Heavy Underlift Service

24 HOUR EMERGENCY SERVICE
604-856-8721

Office Located at 920 - 272 Street, Aldergrove, BC V4W 2P8
www.quiringtowing.com - contact@quiringtowing.com

Puzzled about how to increase employee engagement?
Trying to sort out next career steps?
Thinking about self-employment?
Need help facilitating meetings/workshops?

Life Strategies LTD.

Local coaches/consultants
with global services supporting
individuals/organizations
to be the best they can be

imagine... achieve... excel

www.lifestrategies.ca / info@lifestrategies.ca / 604-856-2386

APOCALYPSE Training Fitness

Let your get in Shape for summer

Be your change your lifestyle for life!
Start today!

Summer is upon us!!

Don't just get in shape for summer this year...get in shape for life!
Come out an join **Apocalypse Training and Fitness**.
This is the shake up you have been looking for!!

3 month special **ONLY \$120**

New members only!
Let your "get in shape for summer" goal be the start of your
Health and Fitness for life Goal!

30- 26157B 262 Street Aldergrove
www.apocalypsetraining.ca

@ApocalypseTrain f **604.381.0065**

save on foods

AN ACTIVE PART OF THE COMMUNITY

Proud supporter of the Aldergrove Fair

100 - 26310 Fraser Highway
Aldergrove, BC V4W 2Z7

Tel: 604-607-6555



BobsSteakhouse.ca | 604.857.7725

~ Downtown Aldergrove ~

